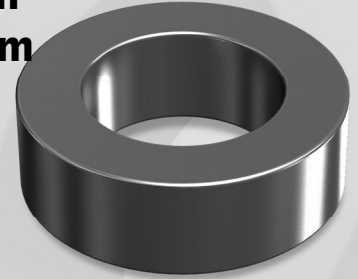


OD 508

OD 50.80mm / 2.000inch

**ID 31.75mm
HT 13.46mm**



Core Dimensions

		OD(max)	ID(min)	HT(max)
Before coating	(mm)	50.80	31.75	13.46
	(inch)	2.000	1.250	0.530
After coating (Epoxy)	(mm)	51.70	30.90	14.35
	(inch)	2.035	1.218	0.565

Magnetic Dimensions

Cross Section (A)	Path Length (l)	Window Area (Wa)	Volume (V)
1.251cm ²	12.73cm	7.50cm ²	15.929cm ³
0.194in ²	5.02in	1,484,000cmil	0.9739in ³

Winding Information

AWG Wire No.	Single Layer Dia(cm)	Turn	Rdc,Ω	AWG Wire No.	Single Layer Dia(cm)	Turn	Rdc,Ω
10	0.267	30	0.00539	19	0.0980	85	0.110
11	0.238	33	0.00754	20	0.0879	95	0.154
12	0.213	38	0.0105	21	0.0785	107	0.216
13	0.190	43	0.0147	22	0.0701	120	0.306
14	0.171	48	0.0205	23	0.0632	133	0.424
15	0.153	54	0.0287	24	0.0566	149	0.596
16	0.137	60	0.0402	25	0.0505	167	0.838
17	0.122	68	0.0562	26	0.0452	186	1.18
18	0.109	76	0.0788	27	0.0409	207	1.64

Single layer winding with 1 inch leads

Available Cores

MPP	Part No.			AL (nH/N ²)	Perm. (μ)
	High Flux	Sendust	Mega Flux®		
CM508026	CH508026	CS508026	CK508026	32	26
CM508060	CH508060	CS508060	CK508060	73	60
-	-	CS508075	CK508075	91	75
-	-	CS508090	CK508090	109	90
CM508125	CH508125	CS508125	-	152	125
CM508147	-	-	-	179	147
CM508160	-	-	-	195	160
-	-	-	-	-	173
-	-	-	-	-	200

AL vs NI Curve (60μ, 125μ)

