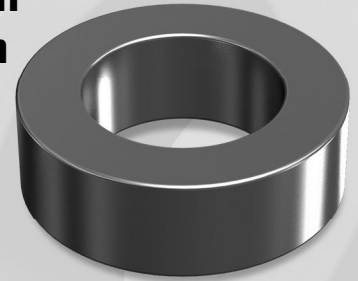


OD203

OD 20.32mm / 0.800inch

**ID 12.70mm
HT 6.35mm**



Core Dimensions

		OD(max)	ID(min)	HT(max)
Before coating	(mm)	20.32	12.70	6.35
	(inch)	0.800	0.500	0.250
After coating (Epoxy)	(mm)	21.1	12.07	7.11
	(inch)	0.830	0.475	0.280

Magnetic Dimensions

Cross Section (A)	Path Length (l)	Window Area (Wa)	Volume (V)
0.226cm ²	5.09cm	1.14cm ²	1.1510cm ³
0.035in ²	2.01in	225,600cmil	0.07035in ³

Winding Information

AWG Wire No.	Single Layer Dia(cm)	Turn	Rdc,Ω	AWG Wire No.	Single Layer Dia(cm)	Turn	Rdc,Ω
12	0.213	13	0.00221	21	0.0785	40	0.0430
13	0.190	15	0.00307	22	0.0701	45	0.0604
14	0.171	17	0.00424	23	0.0632	50	0.0834
15	0.153	19	0.00590	24	0.0566	56	0.117
16	0.137	22	0.00822	25	0.0505	63	0.164
17	0.122	25	0.0114	26	0.0452	71	0.230
18	0.109	28	0.0159	27	0.0409	79	0.318
19	0.0980	32	0.0222	28	0.0366	89	0.448
20	0.0879	35	0.0308	29	0.0330	98	0.614

Single layer winding with 1 inch leads

Available Cores

MPP	Part No.			AL (nH/N ²)	Perm. (μ)
	High Flux	Sendust	Mega Flux®		
CM203026	CH203026	CS203026	CK203026	14	26
CM203060	CH203060	CS203060	CK203060	32	60
-	-	CS203075	CK203075	41	75
-	-	CS203090	CK203090	49	90
CM203125	CH203125	CS203125	-	68	125
CM203147	CH203147	-	-	81	147
CM203160	CH203160	-	-	87	160
CM203173	-	-	-	96	173
CM203200	-	-	-	109	200

AL vs NI Curve (60μ, 125μ)

